




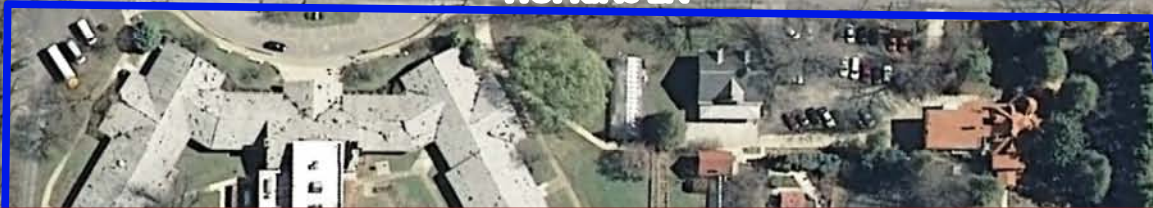
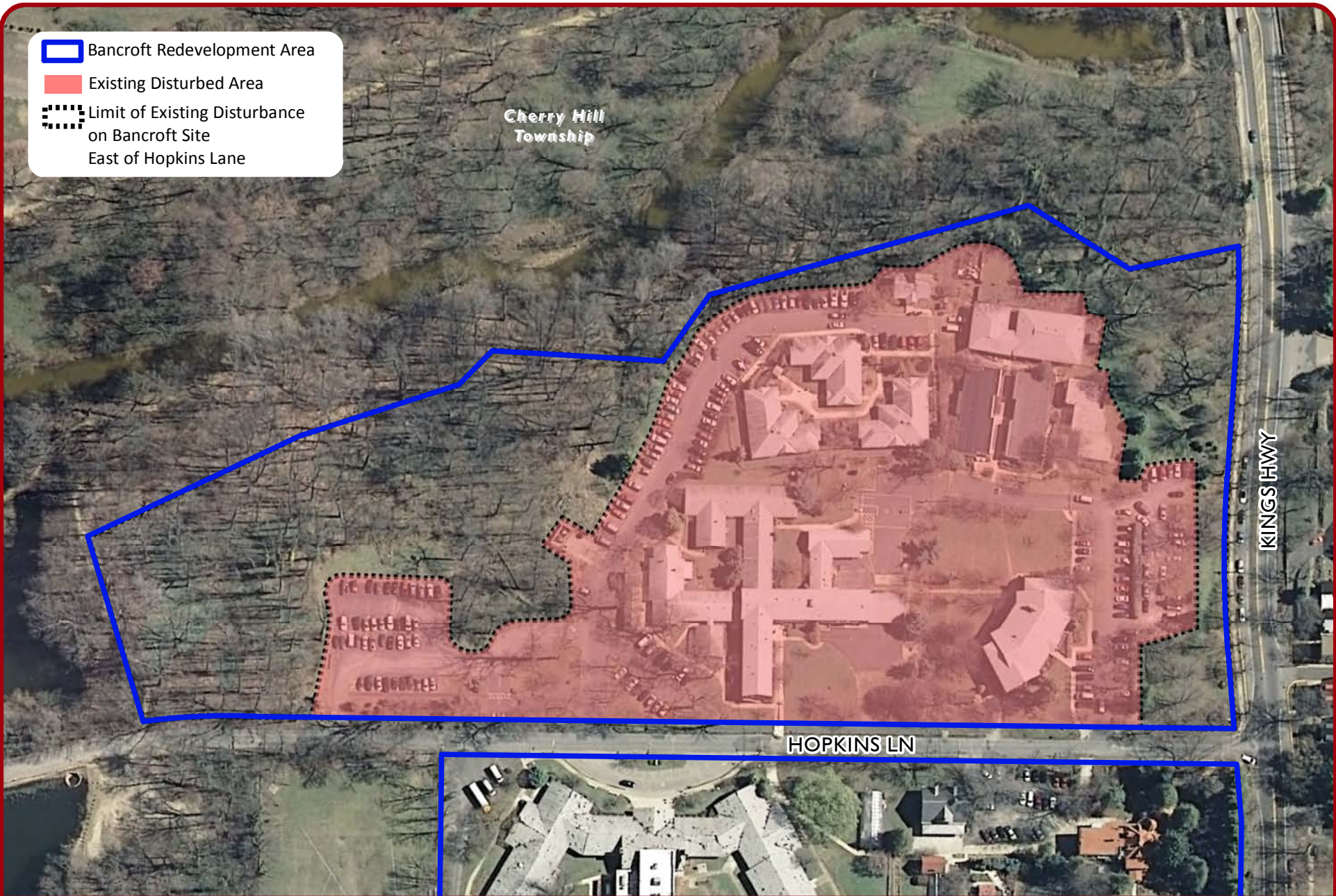


**Existing Disturbed Area and  
Revised Concept Plan  
East Side of Hopkins Lane  
October 2010**

At the Borough Planning Board joint information meeting on September 23, 2010 with the Borough Planners and other professionals in connection with the proposed redevelopment plan for the Bancroft Property, the Planning Board indicated that it may recommend that the proposed development of the Continuing Care Retirement Community Complex occur within the area currently used by Bancroft. This map is provided to the Planning Board as a visual example of such a development to assist the Planning Board in determining whether to make a recommendation.

October 18, 2010

-  Bancroft Redevelopment Area
-  Existing Disturbed Area
-  Limit of Existing Disturbance on Bancroft Site East of Hopkins Lane






Data Source: NJDEP, Haddonfield Parcels; Contours from 2002 Digital Elevation Grids, 2007 Land Use Land Cover, 2010 SWQS

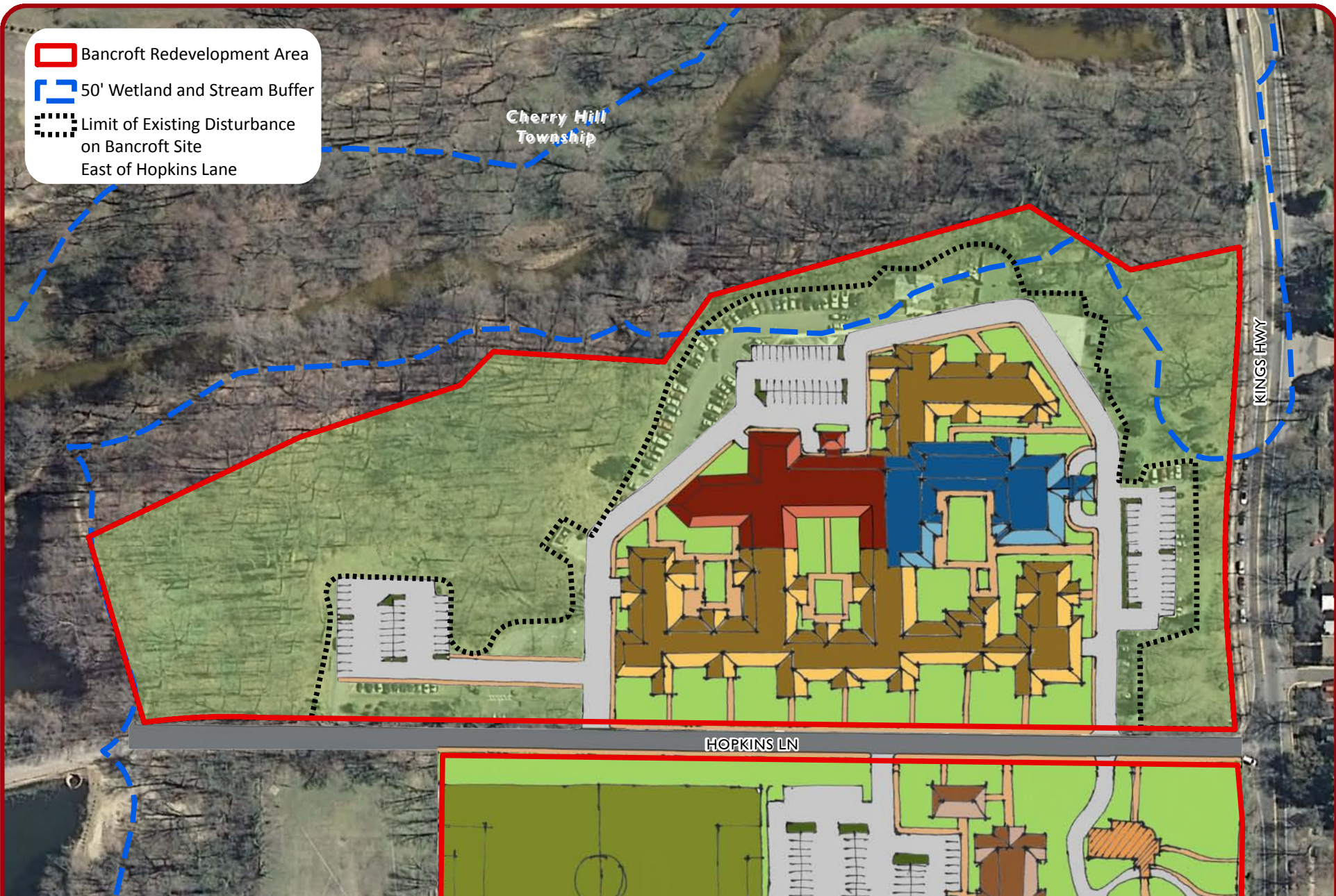
Borough of Haddonfield, Camden County

# East Side of Hopkins Lane Existing Disturbed Area Map



October 2010

-  Bancroft Redevelopment Area
-  50' Wetland and Stream Buffer
-  Limit of Existing Disturbance on Bancroft Site East of Hopkins Lane



Data Source: Haddonfield Parcels, NJDEP; Contours from 2002 Digital Elevation Grids, 2007 Land Use Land Cover, 2010 SWQS

Borough of Haddonfield, Camden County

# Revised Concept Plan



October 2010